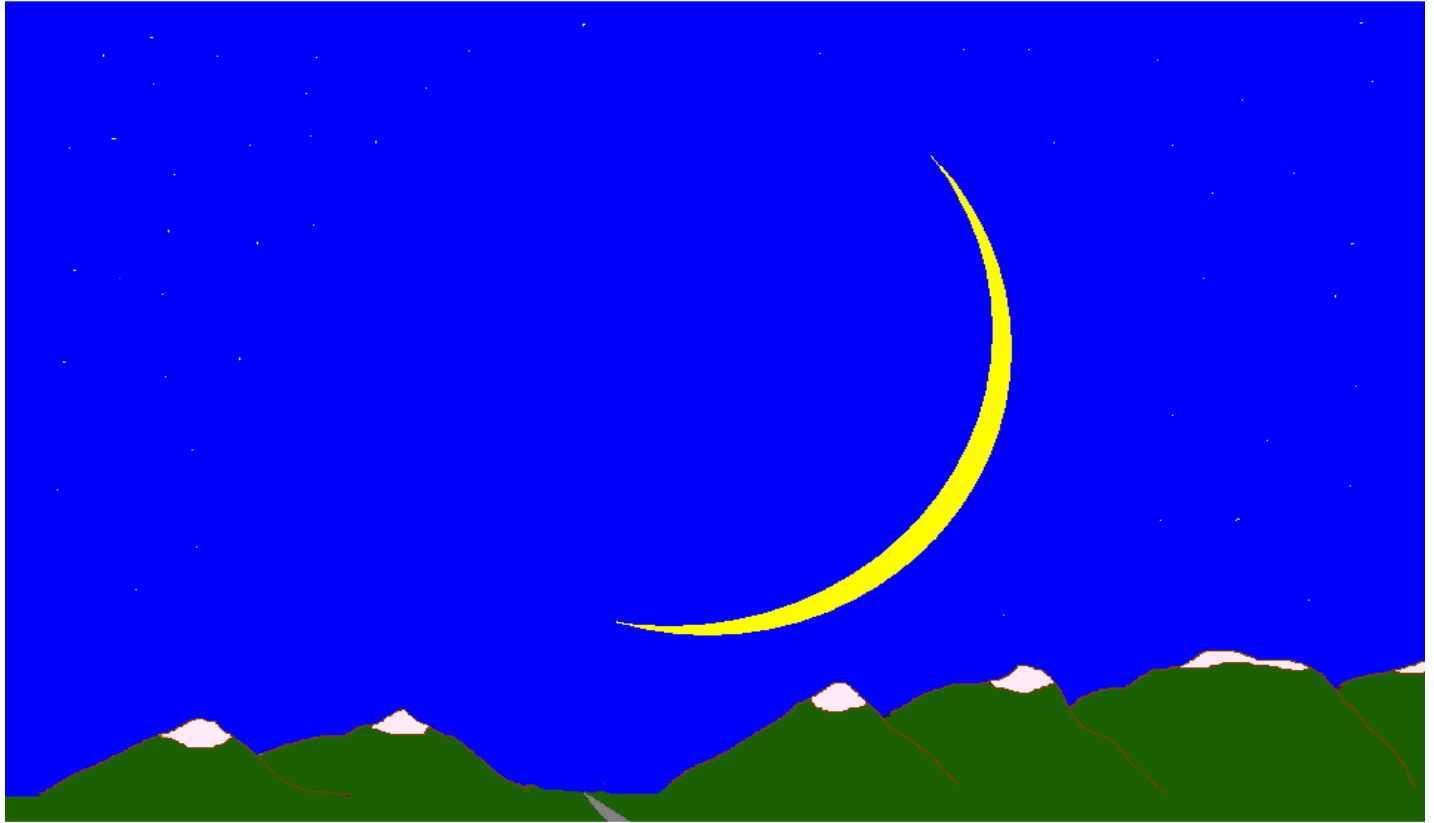


# SOMETHING DIFFERENT:



## LUNAR SABBATHS

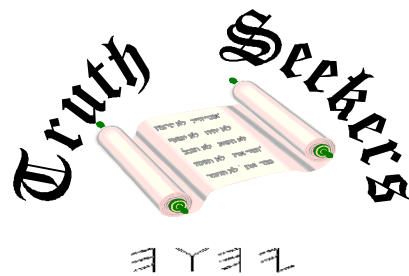
Sunday	Monday	Tuesday	Wednesday	Thursday	Friday	Saturday
	<b>Fourth Sabbath of Previous Month (29<sup>th</sup> day of month)</b>	<b>“Conjunction Day” 30<sup>th</sup> day of previous month, (Not considered a day of the week)</b>	<b>1 New Moon Day (Not considered a day of the week)</b>	<b>2</b> Day one of work week ( <b>Sabbath this month will fall on a Wednesday</b> )	<b>3</b> Day two of work week	<b>4</b> Day three of work week
<b>5</b> Day four of work week	<b>6</b> Day five of work week	<b>7</b> Day six of work week	<b>8</b> <b>Day seven (first Sabbath of the month)</b>	<b>9</b> Day one of work week	<b>10</b> Day two of work week	<b>11</b> Day three of work week
<b>12</b> Day four of work week	<b>13</b> Day five of work week	<b>14</b> Day six of work week	<b>15</b> <b>Day seven (second Sabbath of the month)</b>	<b>16</b> Day one of work week	<b>17</b> Day two of work week	<b>18</b> Day three of work week
<b>19</b> Day four of work week	<b>20</b> Day five of work week	<b>21</b> Day six of work week	<b>22</b> <b>Day seven (third Sabbath of the month)</b>	<b>23</b> Day one of work week	<b>24</b> Day two of work week	<b>25</b> Day three of work week
<b>26</b> Day four of work week	<b>27</b> Day five of work week	<b>28</b> Day six of work week	<b>29</b> <b>Day seven (fourth Sabbath of the month)</b> <b>ALSO:</b> <b>“Conjunction Day”</b>	<b>1</b> <b>New Moon Day (Not considered a day of the week)</b>	<b>2</b> Day 1 of new month’s work week; <b>Sabbath this month on a Thursday</b>	<b>3</b> Day two of work week

By Larry and June Acheson

# SOMETHING DIFFERENT: LUNAR SABBATHS

*By Larry and June Acheson*

First Printing, 2002  
Revised, Fall 2006  
Latest Revision, Fall 2008



A Truth Seekers Publication

[seekutruth@aol.com](mailto:seekutruth@aol.com)